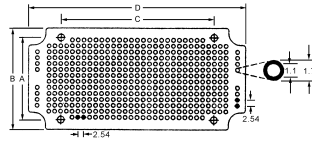
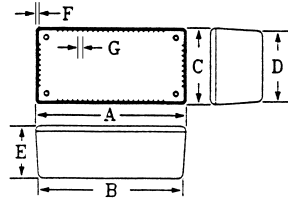
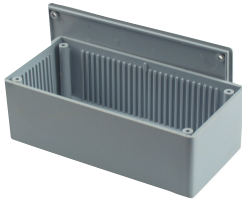


Universal PCB



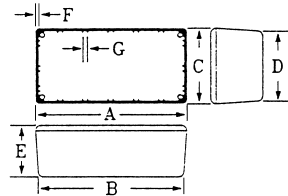
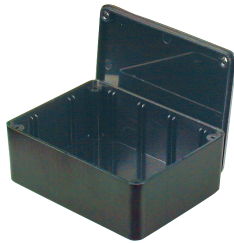
Model	Dimensions (mm)				Pads	Side	Fit with
	A	B	C	D			
SP7740	33.6	41.7	65.8	93.4	407	single	SP7750
SP7741	43.2	51.3	89.7	116.5	744	single	SP7751
SP7742	68.3	76.4	111.8	139.0	1384	single	SP7752
SP7744	33.6	41.7	65.8	93.4	407	double	SP7750
SP7745	43.2	51.3	89.7	116.5	744	double	SP7751
SP7746	68.3	76.4	111.8	139.0	1384	double	SP7752
SP7747	92.4	100.5	144.0	170.5	2244	double	SP7753

Project box



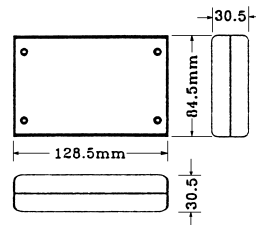
Model	Dimensions (mm)							Weight (g)
	A	B	C	D	E	F	G	
SP7750	104.8	103.0	54.5	53.0	44.5	2.4	2	78
SP7751	129.5	128.7	64.4	63.5	44.5	2.4	2	105
SP7752	150.0	147.8	90.0	88.0	54.9	2.6	2	169
SP7753	185.0	182.0	115.2	112.2	64.6	2.6	2	259
Gray	ABS plastic				Screws supplied			
SP7756	75.4	-	49.5	-	25	3.6	2	30
SP7757	129	-	64.0	-	42	4.0	3.5	74
Black	ABS plastic				Screws supplied			

Project box



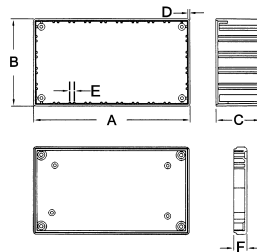
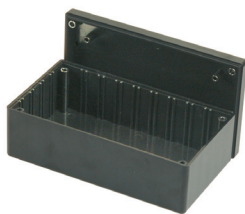
Model	Dimensions (mm)							Weight (g)
	A	B	C	D	E	F	G	
SP7760	76.2	74.0	50.8	48.5	26.8	1.6	none	26
SP7761	111.6	110.0	57.7	56.1	22.0	1.5	none	43
SP7762	100.8	99.3	76.5	75.1	40.8	1.6	2	61
SP7763	150.0	146.8	100	97.0	59.2	1.7	2	115
Black	ABS plastic				Screws supplied			

Project box



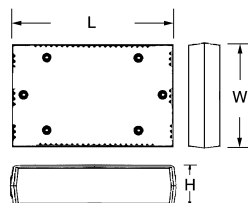
Model	Dimensions (L x W x H) mm	Weight (g)
SP7765	128.5 x 84.5 x 30.5	70
Gray	ABS plastic Screws supplied	

Project box



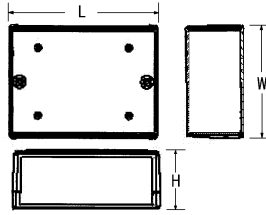
Model	Dimensions (mm)						Weight (g)
	A	B	C	D	E	F	
SP7766	134.8	74.8	39.0	2	2	11.5	96
SP7767	224.4	138.9	72.7	2	2	20.5	340
Black	ABS plastic				Screws supplied		

Instrument box



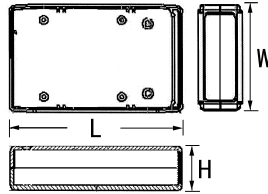
Model	Dimensions (L x W x H) mm	Weight (g)
SP7770	200 x 160 x 63.5	370
SP7771	250 x 190 x 78.5	650
SP7772	250 x 180 x 75.0	565
Gray	ABS plastic Screws supplied	

Instrument box (feet stand)



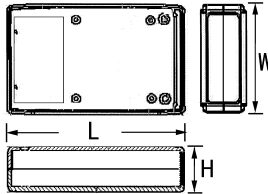
Model	Dimensions (L x W x H) mm	Weight (g)
SP77800	130 x 100 x 30	125
SP77801	130 x 100 x 50	175
SP77802	130 x 100 x 70	212
SP77803	190 x 140 x 30	240
SP77804	190 x 140 x 50	317
SP77805	190 x 140 x 70	375
SP77806	250 x 180 x 50	480
SP77807	250 x 180 x 75	634
SP77808	250 x 180 x 100	708
Gray	ABS plastic	Screws supplied

Project box



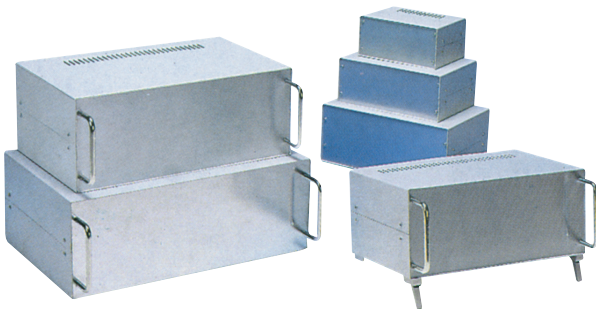
Model	Dimensions (L x W x H) mm	Weight (g)
SP77810	100 x 60 x 25	70
SP77811	120 x 70 x 25	87
SP77812	165 x 80 x 32	150
SP77813	165 x 100 x 32	162
SP77814	185 x 135 x 40	277
SP77815	190 x 100 x 40	230
Gray	ABS plastic	Screws supplied

Project box



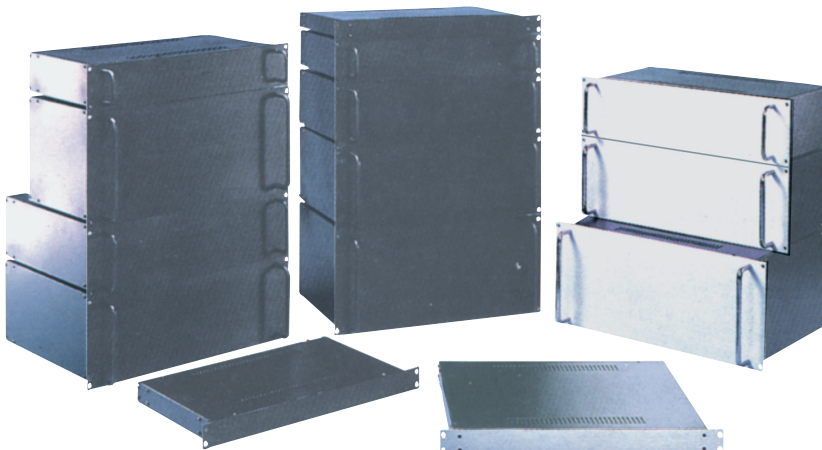
Model	Dimensions (L x W x H) mm	Weight (g)
SP77820	130 x 68 x 25 (sealed type)	80
SP77821	130 x 68 x 25 (non-sealed type)	80
SP77822	160 x 85 x 30 (sealed type)	128
SP77823	160 x 85 x 30 (non-sealed type)	128
Gray	ABS plastic	Screws supplied

Rack mounting case



·Steel is finished in gray color painting

Model	W (m/m)	D (m/m)	H (m/m)	Handle	Aluminum thickness of front panel	Ventilation slot	Remark
SP77940	160	120	75	without	1.5mm	12	rubber feet
SP77941	210	150	85	without	1.5mm	18	rubber feet
SP77942	260	170	110	without	1.5mm	18	rubber feet
SP77943	300	200	130	with	2mm	30	specialtilt-feet
SP77944	360	230	140	with	2mm	30	specialtilt-feet
SP77945	400	260	150	with	3mm	30	specialtilt-feet

 19" Rack mounting case
 Panel color: natural / black


·Steel is finished in black color painting
 ·The panels are with 3mm thick aluminum
 ·The cases are supplied flat packed and are easy to be assembled

Model	Type	External	Front panel
SP77950	1U	436 x 250 x 37mm	482 x 43mm
SP77953	2U	436 x 250 x 81mm	482 x 88mm
SP77955	2U	436 x 350 x 81mm	482 x 88mm
SP77957	3U	436 x 250 x 126mm	482 x 132mm
SP77959	3U	436 x 350 x 126mm	482 x 132mm
SP77960	4U	436 x 250 x 167mm	482 x 174mm
SP77962	4U	436 x 350 x 167mm	482 x 174mm
SP77963	5U	436 x 250 x 211mm	482 x 217mm
SP77965	5U	436 x 350 x 211mm	482 x 217mm