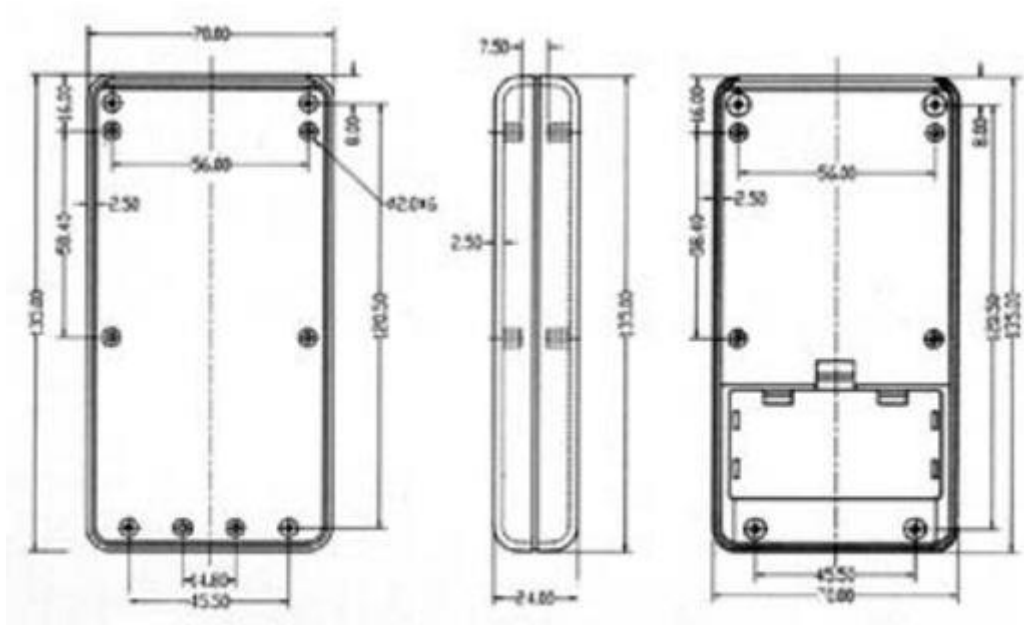


# REMOTE CONTROL KEYBOARD ENCLOSURE - 135 x 70 x 24mm – G939



**G939**

dimensions in mm



These cases resemble the enclosure of a large multimeter. They include a battery compartment and the tilting bail is standard. The G900-series is available with or without a cutaway for the display. The top and bottom parts are equipped with a tongue and groove sealing system that permits gasketing. The gasket is available as a separate item. The durable and professionally moulded tilting bail can also be used to hang the enclosure on a nail in the wall. The two halves of the enclosure are held together by 4 brass inserts in the lid and by M3 screws (supplied).

## Specifications

- material: ABS
- dimensions: 135 x 70 x 24mm
- colour: -
- remark: with IR window and 9V-battery compartment