

actual size

# Ceramic Resonators • JTB

## Through Hole Type

### Features

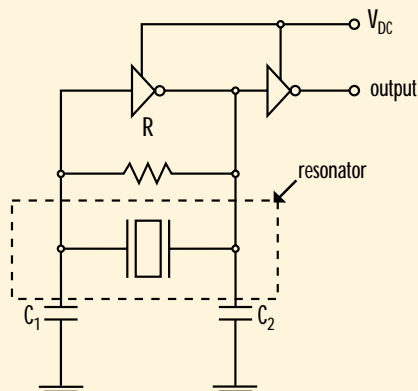
- different package sizes
- wide frequency range

## General Data

type	D	P	E	P	J	
frequency range in MHz	190.0 ~ 374.0	375.0 ~ 429.0	430.0 ~ 509.0	510.0 ~ 699.0	700.0 ~ 999.0	1000.0 ~ 1250.0
series resistance ESR max.	20 Ω	20 Ω	20 Ω	30 Ω	70 Ω	100 Ω
frequency stability at 25 °C	± 1.0 kHz	± 1.0 kHz	± 2.0 kHz	± 2.0 kHz	± 0.5 kHz	± 0.5 kHz
frequency stability vs. temperature range	± 0.3 %	± 0.3 %	± 0.3 %	± 0.3 %	± 0.3 %	± 0.3 %
operating temperature range	-20 °C ~ +80 °C	-20 °C ~ +80 °C	-20 °C ~ +80 °C	-20 °C ~ +80 °C	-20 °C ~ +80 °C	-20 °C ~ +80 °C
aging over 10 years	± 0.3 %	± 0.3 %	± 0.3 %	± 0.3 %	± 0.3 %	± 0.3 %

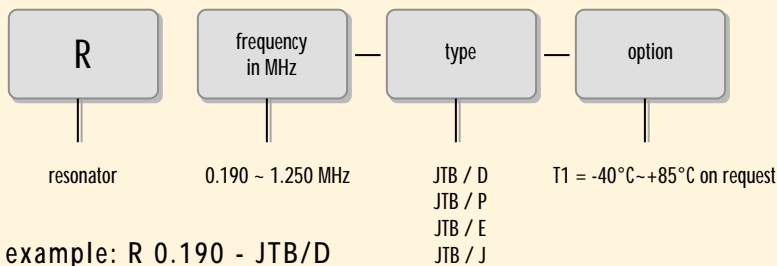
## Test Circuit RJ

without built-in capacitors



VDC: 3.3V or 5.0V  
 R: 1 MOhm  
 C1/C2: 330 / 470 pF (190 ~ 249 kHz)  
 220 / 470 pF (250 ~ 374 kHz)  
 120 / 470 pF (375 ~ 400 kHz)  
 100 / 100 pF (401 ~ 1250 kHz)

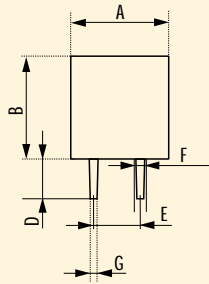
## Order Information



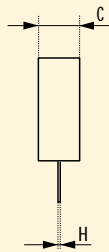
# Ceramic Resonators • JTB

## Dimensions RJ

top view



side view



	A	B	C	D	E	F	G	H
190.0 ~ 249.0 kHz	13.5	14.7	3.8	8.0	10.0	1.2 max.	0.80	13.5
250.0 ~ 374.0 kHz	11.0	12.2	3.8	7.0	7.7	1.2 max.	0.80	11.0
375.0 ~ 400.0 kHz	7.9	9.3	3.6	7.0	5.0	1.0 max.	0.65	7.9
401.0 ~ 699.0 kHz	7.0	9.0	3.5	5.5	5.0	0.8 max.	0.50	7.0
700.0 ~ 1250.0 kHz	5.2	6.8	2.8	3.5	2.5	0.8 max.	0.50	5.2

Packing unit: 500 pcs. per bag

in mm