



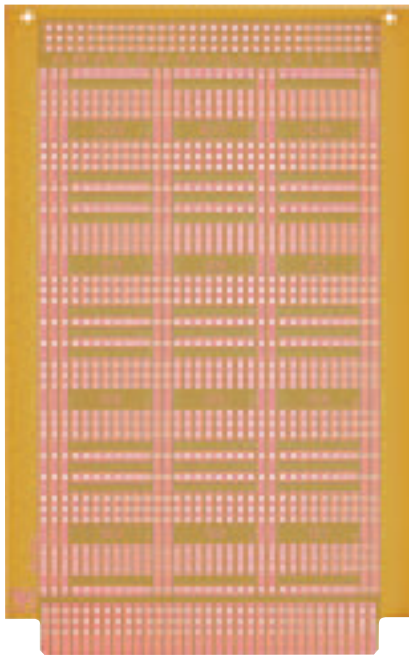
RolloSolutions

RADEMACHER range of circuit boards

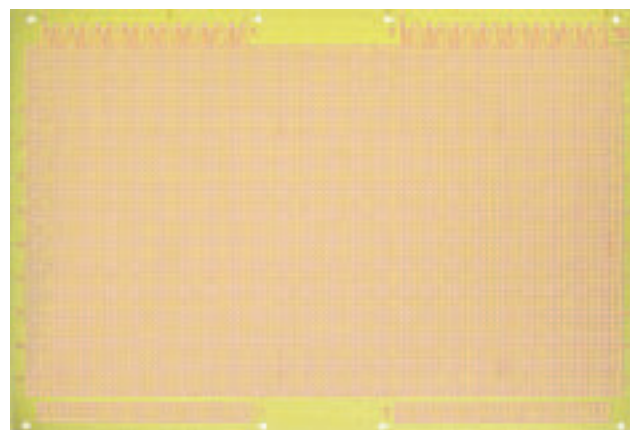
With its RolloSolutions, RADEMACHER is a strong partner in the field of circuit boards, owing to its exceptionally high quality and many years of experience. Everything is available from one source, from soldering strips and copper plates, breadboard and soldered grid boards, right through to an extensive range of circuit boards - quick, easy and professional.

The following two pages will provide you with a brief glimpse of the RADEMACHER range of circuit boards. Please request our current brochure for this product range containing everything you need to know about all of our products at info@rademacher.de or by contacting our Internal Sales team.

RolloSolutions – we can do this for you too!



Circuit board item no.
932 is shown



Circuit board item no.
936 is shown

RolloSolutions - A brief overview


Item no. 1010

Simple laminated board soldering strips, Class IV, Thickness 1.5 mm: Width: 11 mm, Contact spacing: 8 mm, fitted with brass plug soldering eyelets (silver-plated and passivated)

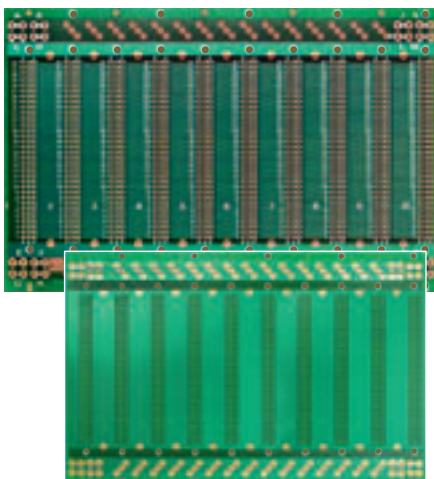


- Photo plates with new environmentally-friendly photo positive coating (without CHCs)
- Absolutely even application of the photo layer
- Colour photo lacquer
- Very fine resolution capacity
- With protective film that is impervious to light

- Film adheres firmly right to the very edges
- High-quality base material
- Precise dimensional stability
- Identical quality from delivery to delivery

Models:

Item number	Material	One and two sides	Mat. thickness
510	Epoxy resin, one-side	1 x 35 μ	1.5 mm
511	Epoxy resin, two-sided	2 x 35 μ	1.5 mm
520	Laminated card, one-side	1 x 35 μ	1.5 mm
521	Laminated card, two-sided	2 x 35 μ	1.5 mm

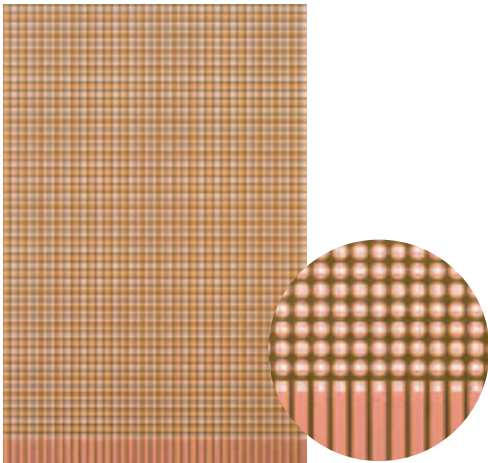

Item no. 940

Epoxy resin with Cu coating on both sides. Both sides have a soldering stop lacquer and have a positioning print on one side. Bus cabling is becoming more and more popular owing to its particular advantages. These cards are used in both series production, as well as in the construction of made-to-measure products. Item 940 is characterised in particular by the following features:

Dimensions:	128 x 203.2 mm
Grid:	2.54 mm (connectors)
Circuit paths:	refer to diagram
Punched holes:	0.9 mm (connectors)
Cu. coating:	2 x 35 μ
Mat. thickness	1.5 mm
Packing unit:	5 no.

- Design based on the "Euro-bus" model
- Minimal crosstalk
- Its uniqueness, in terms of switching technology, according to which both 64-pole, as well as 96-pole connectors (models B + C, DIN 41612) can be used
- Fixing holes for 19" housing
- Additional mass and potential wiring on the top and bottom side

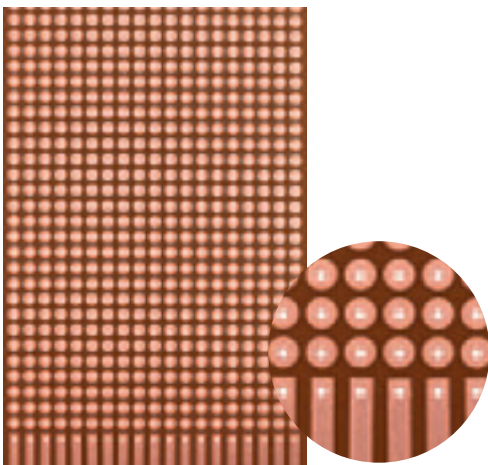
The card is supplied for stock with 10 plug-in positions. Other dimensions are also available on request.



Item no. 820

Laminated card with Cu coating
Plug contacts for 39-pole direct plugs on one side

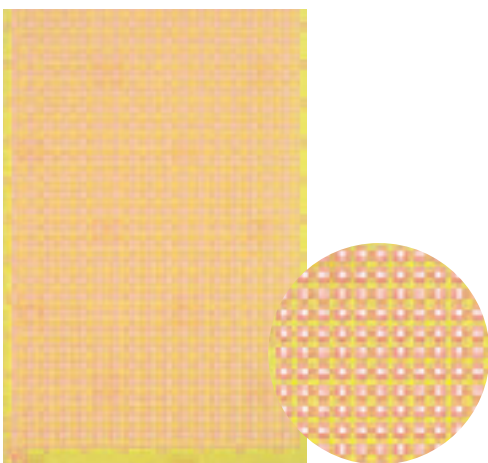
Dimensions:	100 x 160 mm
Grid:	2.54 mm
Rows of holes:	39
Punched holes:	1.0 mm
Cu. coating:	35 μ
Mat. thickness	1.5 mm
Packing unit:	25 no.



Item no. 821

Laminated card with Cu coating
Plug contacts for 19-pole direct plugs on one side

Dimensions:	100 x 160 mm
Grid:	5.08 mm
Rows of holes:	19
Punched holes:	1.0 mm
Cu. coating:	35 μ
Mat. thickness	1.5 mm
Packing unit:	25 no.



Items no. 830 and 832

Epoxy resin with Cu coating on one and two sides

	Item no. 830	Item no. 832
	Cu on one side; Cu on both sides	
Dimensions:	100 x 160 mm	100 x 160 mm
Grid:	2.54 mm	2.54
Rows of holes:	37	37
Punched holes:	1.0 mm	1.0 mm
Cu. coating:	35 μ on one side	2 x 35 μ on two sides
Mat. thickness	1.5 mm	1.5 mm
Packing unit:	25 no.	25 no.