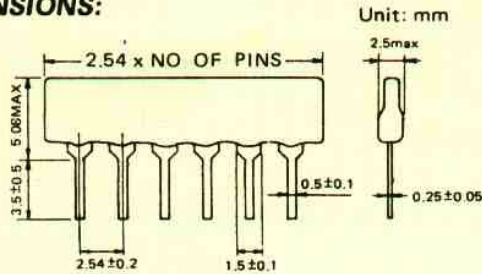


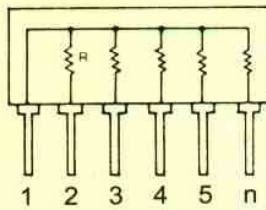
# SIP RESISTOR NETWORKS

## 厚膜排列電阻器

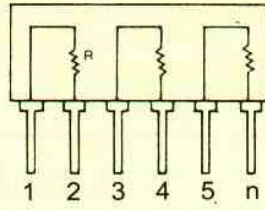
### DIMENSIONS:



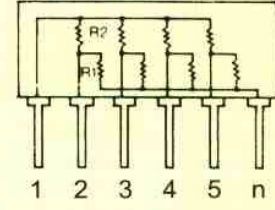
### STANDARD CIRCUIT



A TYPE



B TYPE



C TYPE

### TYPE DESIGNATION:

RA	1/8	7	A	100K	J (±5%)
STYLE	POWER RATING	NO. OF PINS	CIRCUIT TYPE	OHMIC VALUE	RESISTANCE TOLERANCE

### RATING

STYLE	PER RESISTOR	MAX WORKING V.	MAX OVERLOAD V.	RESISTANCE RANGE	RESISTANCE TOLERANCE
RA	0.125W	100	150	22Ω-1MΩ	F(±1%), G(±2%), J(±5%)

### PERFORMANCE SPECIFICATION

Items	Spec.	Conditions		Ambient Temp.	70°C
		JIS-C-5202	MIL-R-83401		
Operating Temp.	-55°C- +125°C			Rated Power per element	1/8 W
Resistance Temp. Coeff.	±200ppm/eC	5.2(B)	6.4.8		
Short Time Overload	±1.0%	5.5	4.6.10		
Temperature Cycle	±0.5%	7.4(-55°C/+125°C)	4.6.3		
Load Life	±2.0%	7.10(1,000HR)	4.6.18(70°C 1000HR)		
Moisture-Proof Load Life	±2.0%	7.90(1,000HR)			
Moisture Resistance	±1.0%		4.6.15		
High Temp. Exposure	±1.0%		4.6.19		
Solderability	95% Coverage min.	6.5(230°C/5S)	4.6.6		
Solder Pot	±0.5%	6.4(260°C/10S)	4.6.14		
Terminal Tensile	±0.5%	6.1(1) 1kg/10S	4.6.11		
Terminal bend	2∞	6.1(4) 250g	4.6.11		
				n	Rated Power
				5 pin	0.5 W
				6 pin	0.63 W
				7 pin	0.75 W
				8 pin	0.85 W
				9 pin	1.0 W
				10 pin	1.05 W
				11 pin	1.15 W
				12 pin	1.25 W