

Specifications

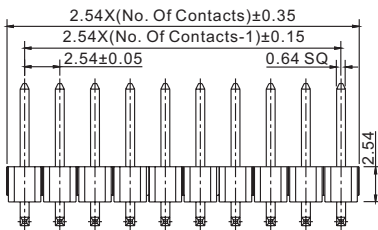
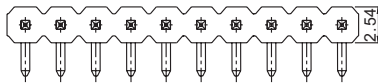
1. Current Rating: 3.0A AC/DC.
2. Voltage Rating: 250V AC/DC.
3. Contact Resistance: 20m ohm. max.
4. Insulation Resistance: 1000M ohm. Min.
5. Withstanding Voltage: 600V AC for one minute.
6. Operating Temperature Range: -40°C to +105°C.

Material and Finish

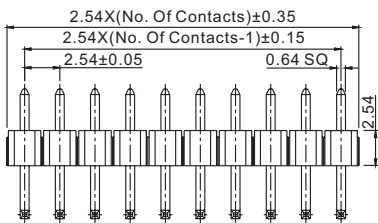
1. Insulator:
Standard: PBT (F1) (UL94V-0);
High Temp Plastic: Nylon 6T (F2)(UL94V-0).
2. Insulator Height: 1.50/1.70/2.00/2.54/3.00mm, (Detail Spec, Consult to Sales dept).
3. Contact: Copper Alloy.
4. Plating: Gold Plated.

Feature

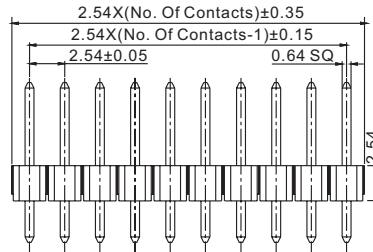
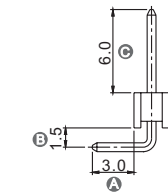
1. Design for Home Appliances, Aviation Electronics, Automobile Electronics and Computer(PC) Peripherals.



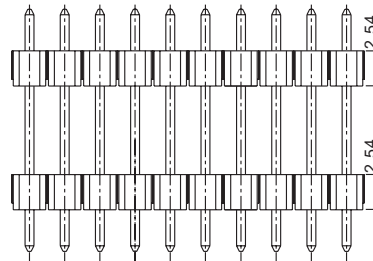
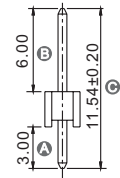
P/N: 2211R-XXG-LP



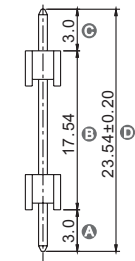
P/N: 2211R-XXG



P/N: 2211S-XXG



P/N: 2211DI-XXG-2354



A/B/C/D Dimension To Be Advised By Value Customers

Ordering Information

2211S-XXG-XXXX

① ② ③ ④

① S: Straight Single Row	③ G: Gold Plated T: Tin Plated	④ Blank: Standard Type XXXX: Special Length C Dimension
② No. Of Contacts (2 To 40 Ways)		

2211R-XXG-LP

① ② ③ ④

① R: Right Angle Single Row	③ G: Gold Plated T: Tin Plated	④ Blank: Standard Type LP: Low Profile Type XXXX: Special Length A/B/C Dimension
② No. Of Contacts (2 To 40 Ways)		

2211DI-XXG-XXXX

① ② ③ ④

① DI: Double Insulator	③ G: Gold Plated T: Tin Plated	④ XXXX: Special Length D Dimension
② No. Of Contacts (2 To 40 Ways)		

Recommended PCB Layout

