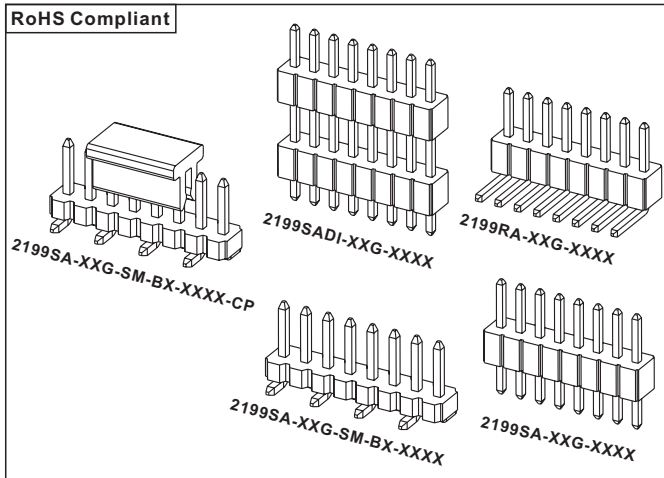




E 144392 E 239329
E 239299 E 315658
E 315997

RoHS Compliant



Specifications

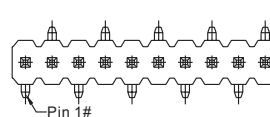
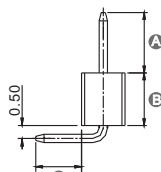
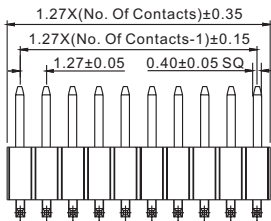
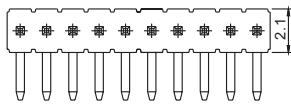
1. Current Rating: 1.0A AC/DC.
2. Voltage Rating: 50V AC/DC.
3. Contact Resistance: 20m ohm. max.
4. Insulation Resistance: 1000M ohm. Min.
5. Withstanding Voltage: 500V AC for one minute.
6. Operating Temperature Range: -25°C to +105°C.

Material and Finish

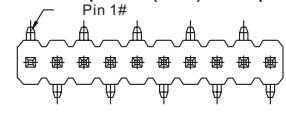
1. Insulator: High Temperature Material (UL94V-0).
2. Insulator Height: 1.5/2.0/2.54mm, (Detail Spec, Consult to sales dept).
3. Contact: Copper alloy.
4. Plating: Gold Plated.

Feature

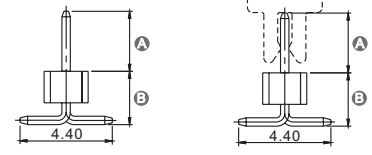
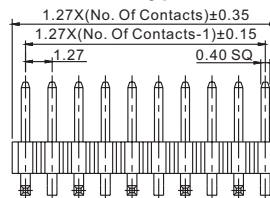
1. Design for Home Appliances, Aviation Electronics, Automobile Electronics and Computer(PC) Peripherals.



B1 Type



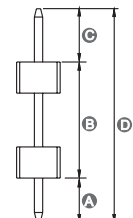
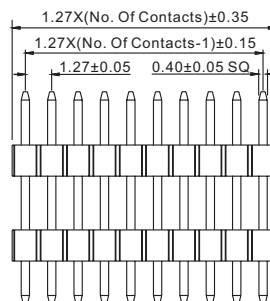
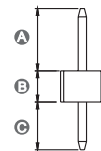
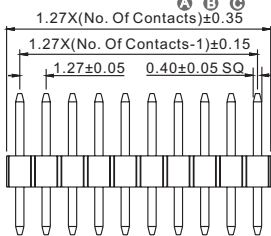
B2 Type



CP Type

P/N: 2199SA-XXG-SM-BX-2825 (A=2.8, B=2.5 Standard Type)

P/N: 2199RA-XXG-302523 (A=3.0, B=2.5, C=2.3 Standard Type)



P/N: 2199SA-XXG-301523 (A=3.0, B=1.5, C=2.3 Standard Type)

P/N: 2199SADI-XXG-XXXX

A/B/C/D Dimension To Be Advised By Value Customers

Ordering Information

2199SA-XXG-XXXX

① ② ③ ④

① SA: Straight Single Row
RA: Right Angle Single Row

② No. Of Contacts (2 To 40 Ways)

④ Special Length
A/B/C Dimension

③ G: Gold Plated
T: Tin Plated

2199SADI-XXG-XXXX

① ② ③ ④ ⑤

① SA: Straight Single Row
② DI: Double Insulator

③ No. Of Contacts (2 To 40 Ways)

⑤ Special Length
D Dimension

④ G: Gold Plated
T: Tin Plated

2199SA-XXG-SM-BX-XXXX-CP

① ② ③ ④ ⑤ ⑥ ⑦

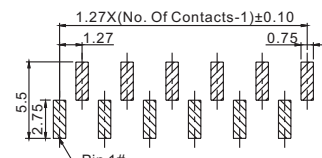
① SA: Straight Single Row
② No. Of Contacts (2 To 40 Ways)

③ G: Gold Plated
④ SM: SMD Type
T: Tin Plated

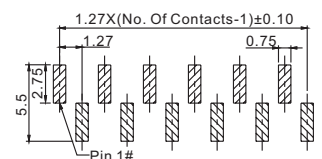
⑤ BX: B1 Type
B2 Type

⑥ XXXX: Special Length
A/B Dimension
⑦ Blank: Standard Type
CP: With Cap

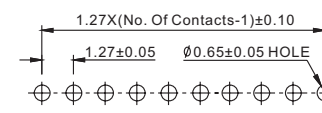
Recommended PCB Layout



P/N: 2219SA-XXG-SM-B1-XXXX



P/N: 2219SA-XXG-SM-B2-XXXX



P/N: 2219RA(SA)(SADI)-XXG-XXXX

Unit:mm