

## CIF04007 - Plug

Number of poles: 4, Clamp tightening, 16A, 2.5mm<sup>2</sup>, 12AWG, 600V, Pitch 7,62 mm, A, Wiring mode Straight, Green (RAL 6032), Soldering technology Not applicable, UL, VDE, IMQ, CSA



Number of poles:	4
Number of levels:	1
Sides configuration:	Side stackable
Pitch:	7,62 mm
Voltage:	600 V
Current :	16 A
Wire section:	0.05 ÷ 2.5 mm <sup>2</sup> / 30 ÷ 12 AWG
Available approvals:	UL, VDE, IMQ, CSA

## General Data

### Features

Screw dimension	M3
Stripping length	7.5 mm
Insertion force	3 N
Withdrawal force	1.5 N
Operating temperature range	-40°C ÷ 120°C
Contact resistance	<15 mOhm
Insulation resistance	>1 GOhm

## Certifications

### CSA (n.LR 102896)

Rated voltage	300 V
Nominal current	15 A
Wire section	12 AWG

### IMQ (n.EM672)

Rated voltage	600 V		
Nominal current	12 A		
Wire section	2.5 mm <sup>2</sup>		
Insulating category	I		
Overvoltage category/Pollution degree	III/3	III/2	II/2
Impulse voltage	6kV	6kV	6kV
Rated voltage	400V	600V	1000V
Insulation voltage	400V	630V	1000V

### UL (n.E167473)

Rated voltage	300 V
Nominal current	15 A
Wire section	12 AWG

## VDE (n.40027448 Reg.-Nr. 112754)

Rated voltage	500 V
Nominal current	16 A
Wire section	2.5 mm <sup>2</sup>
Insulating category	III

## Materials

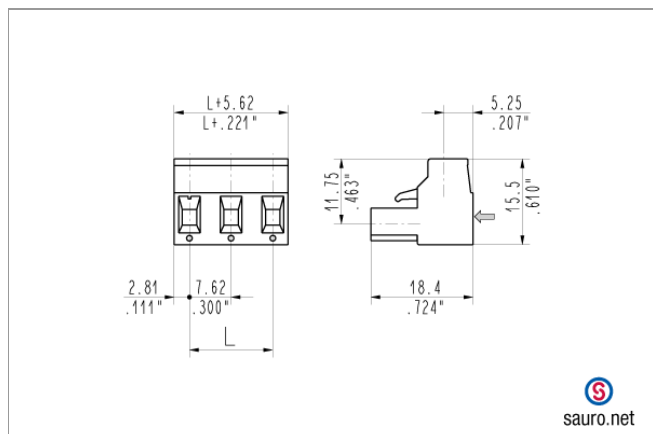
### Components

Screw material	Nickel-plated copper alloy
Spring contact	Tin-plated copper alloy
Clamp tightening	Nickel-plated copper alloy
Insulating housing material	PA Polyamide
Insulating material group	I (CTI >= 600V)

### Available colors

green	(similar to RAL 6032)
black	(similar to RAL 9005)
light grey	(similar to RAL 7035)
dark gray	(similar to RAL 7040)
orange	(similar to RAL 2003)
blue	(similar to RAL 5012)
red	(similar to RAL 3017)
another colors	(on demand)

## Technical drawing



## Derating curve

