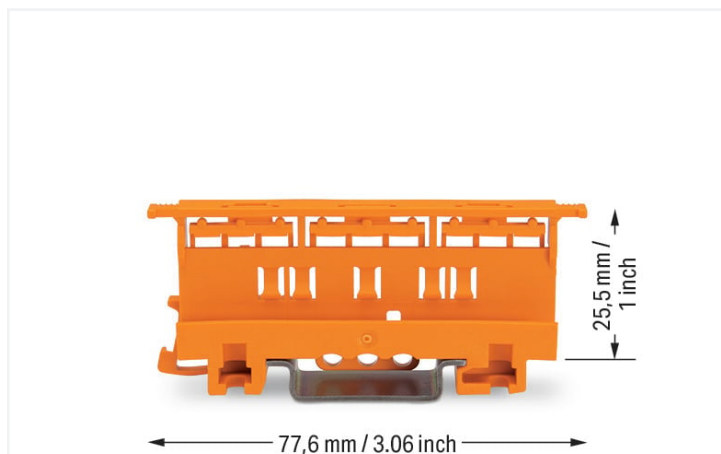


## Data Sheet | Item Number: 221-500

Mounting carrier; 221 Series - 4 mm<sup>2</sup>; for DIN-35 rail mounting/screw mounting;  
orange

<https://www.wago.com/221-500>



Color: ■ orange

### Physical data

Width	17.5 mm / 0.689 inches
Height	77.6 mm / 3.055 inches
Depth from upper-edge of DIN-rail	25.5 mm / 1.004 inches

### Mechanical data

Mounting type	DIN-35 rail Screw mount
Suitable	for 2-, 3- and 5-conductor 221 Series Splicing Connectors (4 mm <sup>2</sup> )

### Material data

Note (material data)	<a href="https://www.wago.com/us/material-specifications">Information on material specifications can be found here</a>
Color	orange
Material group	I
Insulation material	Polyamide (PA66)
Flammability class per UL94	V0
Fire load	0.294 MJ
Weight	9.8 g

### Commercial data

eCl@ss 10.0	27-14-11-92
eCl@ss 9.0	27-14-11-92
ETIM 8.0	EC002848
ETIM 7.0	EC002848
PU (SPU)	50 (10) pcs
Packaging type	Box
Country of origin	CN
GTIN	4055143421942
Customs tariff number	39269097900

## Environmental Product Compliance

RoHS Compliance Status	Compliant, No Exemption
------------------------	-------------------------

## Downloads

### Environmental Product Compliance

Compliance Search	
Environmental Product Compliance 221-500	<a href="#">↓</a>

## Documentation

Bid Text			
221-500	19.02.2019	xml 2.72 KB	<a href="#">↓</a>
221-500	23.01.2019	docx 14.58 KB	<a href="#">↓</a>
ausschreiben.de 221-500			<a href="#">↓</a>

## CAD/CAE-Data

CAD data	
2D/3D Models 221-500	<a href="#">↓</a>

CAE data	
EPLAN Data Portal 221-500	<a href="#">↓</a>
ZUKEN Portal 221-500	<a href="#">↓</a>

## 1 Compatible Products

### 1.1 Optional Accessories

#### 1.1.1 Marking

##### 1.1.1.1 Marking strip



**Item No.: 210-833**  
 Marking strips; 25 m on roll; 6 mm wide;  
 plain; Self-adhesive; white

##### 1.1.2 Mounting adapter

1.1.2.1 Mounting accessories



**Item No.: 222-510**

Angled DIN-rail adapter; in combination with mounting carrier; 221-500 or 222-500; for DIN-35 rail mounting; gray

**Item No.: 222-505**

Strain relief plate; for mounting carrier; 221 or 222 Series, can be snapped

Installation Notes

Conductor termination



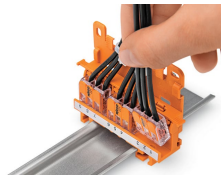
**CAGE CLAMP® connection:**

Conductor termination with connectors fitted in a mounting carrier

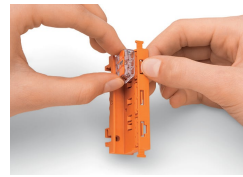
Removing a conductor.



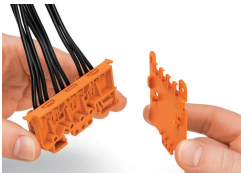
Inserting a connector into the mounting carrier.



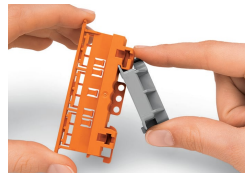
Inserting a connector into the mounting carrier.



Removing a connector from the mounting carrier.



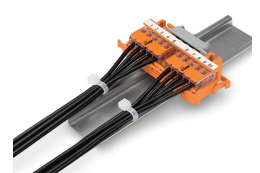
Securing a strain relief plate (222-505) to the mounting carrier.



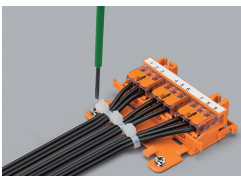
Snapping the angled DIN-rail adapter (222-510) onto the mounting carrier.



Horizontal mounting on DIN-35 rail using an angled DIN-rail adapter



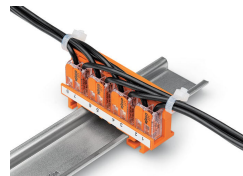
Horizontal mounting on DIN-35 rail using an angled DIN-rail adapter



Horizontal screw mounting with strain relief plate on a flat surface



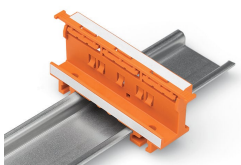
Vertical mounting with strain relief plate on DIN-35 rail



Strain relief via cable ties on the mounting carrier (transverse to the connectors' wiring direction) – clamping units labeled via marking strips (210-334)



Vertical screw mounting with strain relief plate on a flat surface



Mounting carrier on a DIN-35 rail

Testing



Testing connectors via test slots on top of the carrier.