



2MHz USB FUNCTION GENERATOR PCGU1000



2.0 & 1.1 compatible

In the box:

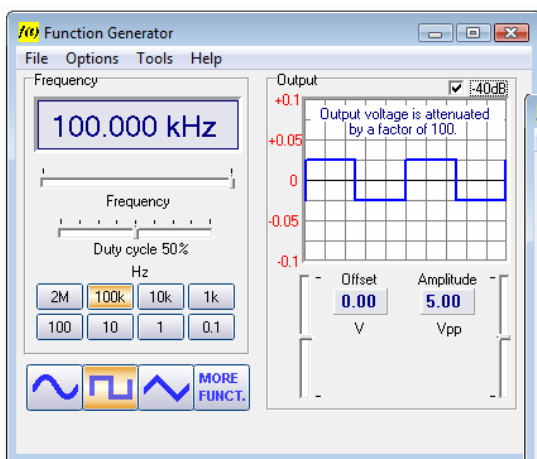


Small and stylish, Space saving design

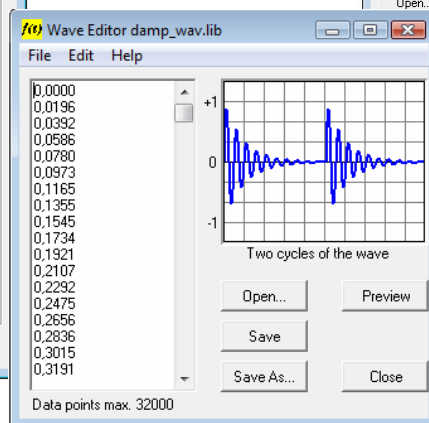
Turns your computer into a powerful function generator !

Features:

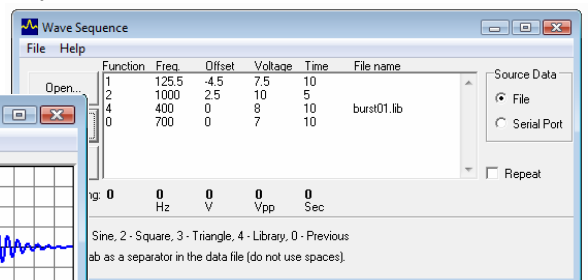
- ✓ Frequency range from 0.01Hz to 2 MHz.
- ✓ Crystal-based stability.
- ✓ **USB port is galvanically isolated from the PC.**
- ✓ Low sine wave distortion.
- ✓ Two parallel output connectors for waveforms
- ✓ TTL level synchronization output.
- ✓ Stores up to 8192 of waveform points.
- ✓ Standard waveforms: Sine, Square, and Triangle.
- ✓ Predefined library waveforms included: Noise, Sweep,...
- ✓ Create waveforms with the integrated signal wave editor
- ✓ Sweep frequency range 0.0001Hz to 25MHz
- ✓ Sweep time 1ms to 10 hours
- ✓ Noise mode bandwidth 25MHz
- ✓ Extended bode plot option together with PC scope.
- ✓ Automated wave sequence generation, using file or computer RS232 input.



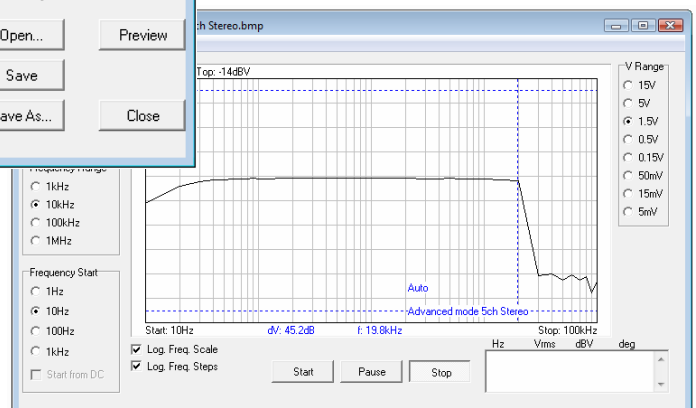
Main screen



Wave editor



Automated wave sequence generation



Bode plot functions, using any of our PC scopes, PCSU1000, PCS500, PCS100.

Specifications:

- Amplitude range: 0.1Vpp to 10Vpp @ 1kHz //600 Ohm / 0V offset
- Frequency setting resolution: 0.01%.
- With internal 40 dB attenuator (output divided by 100)
- Direct Digital wave synthesis (DDS), 8192 samples wave table.
- Amplitude resolution: 0.4% of full scale.
- Offset: from 0 to -5V or +5V max. (resolution 0.4% of full scale).
- Vertical resolution: 8 bits (0.4% of full scale).
- Sample rate: 50MHz.
- Typical sine wave distortion (THD): < 0.08%.
- Output impedance: 2 x 50 Ohm.
- Power supply: World universal 9V DC adapter, 600mA.
- Dimensions (wxdxh): 55x190x200mm (2.2"x7.5"x7.9").

Minimum system requirements

- IBM compatible PC
- Windows 98SE, ME, 2000, XP, Vista
- SVGA display card (min. 800x600)
- mouse
- free USB port
- CD Rom player