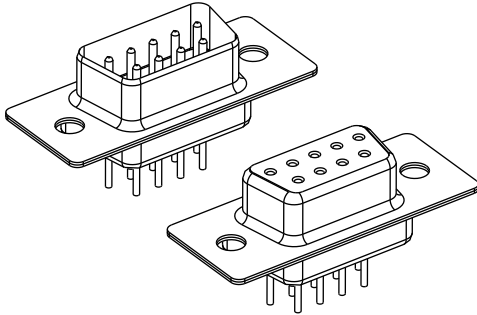


Standard White Color

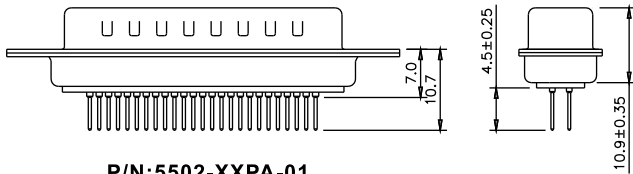
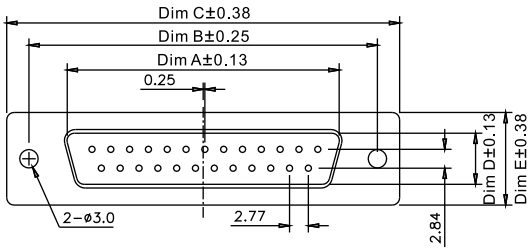


■ Specifications

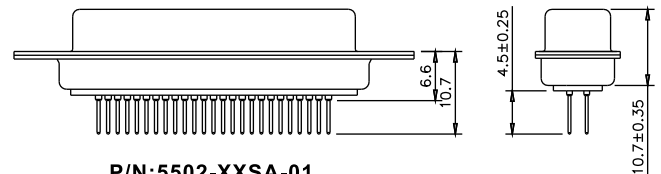
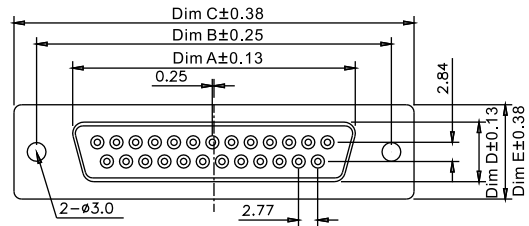
Current rating:3.0A AC/DC  
Voltage rating:250V AC/DC  
Contact resistance:30m ohm. max.  
Insulation resistance:5000M ohm. Min.  
Withstanding voltage:1000V AC for one minute  
Operating temperature range:-40°C to +85°C

■ Material and Finish

Insulator:High Temp. Plastic(UL94V-0)  
Contact:Copper Alloy Nickel Undercoated,  
Selective Gold Plated  
Finish:Metal Iron With Tin Plated



P/N:5502-XXPA-01



P/N:5502-XXSA-01

■ Engineering Dimension

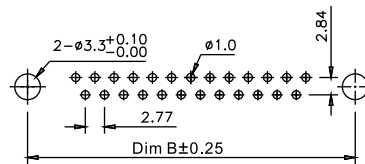
P/N:5502-XXPA-01

Circuits	Dim. A	Dim. B	Dim. C	Dim. D	Dim. E
9	16.92	24.99	30.81	8.38	12.50
15	25.25	33.32	39.14	8.38	12.50
25	38.96	47.04	53.04	8.38	12.50
37	55.42	63.50	69.32	8.38	12.50
50	62.81	61.11	66.93	11.07	15.37

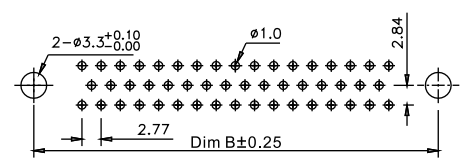
P/N:5502-XXSA-01

Circuits	Dim. A	Dim. B	Dim. C	Dim. D	Dim. E
9	16.33	24.99	30.81	7.90	12.50
15	24.66	33.32	39.14	7.90	12.50
25	38.38	47.04	53.04	7.90	12.50
37	54.84	63.50	69.32	7.90	12.50
50	62.43	61.11	66.93	10.74	15.37

■ Recommended PCB Layout



P.C. Board Layout  
(9,15,25,37 Positions)



P.C. Board Layout  
(50 Positions)

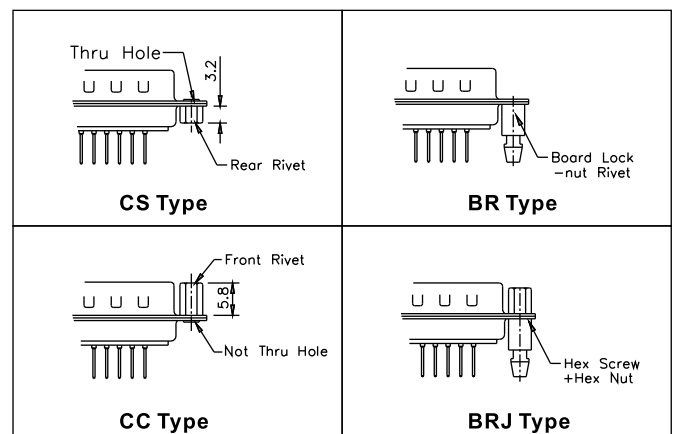
■ Ordering Information

5502-XXPA-01-XX-XX

① ② ③ ④ ⑤

① No. Of Contacts	③ 01:Gold Plated	⑤ Blank White Color (Standard)
② PA:Male SA:Female	④ Blank Standard Type CC:Front Rivet CS:Rear Rivet BR:Board Lock-Nut Rivet BRJ:Hex Screw+Hex Nut	BK:Black Color BU:Blue Color

■ D-SUB Mounting style options



Unit:mm