

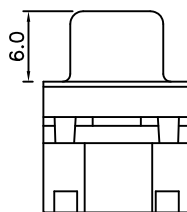
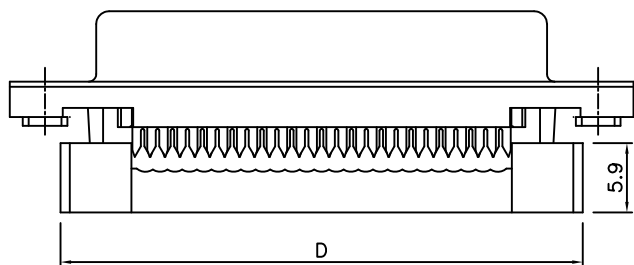
Parts Dimension Table

DIM. a	DIM. b	Inner Thread	Outer Thread
4.8	11.8	4#40	4#40
5.8	12.0	4#40	4#40
4.8	11.8	M3	M3

Specifications:

Current Rating:3.0A AC/DC  
 Voltage Rating:250V AC/DC  
 Contact Resistance:15m ohm. Max.  
 Insulation Resistance:3,000M ohm. Min.  
 Withstanding Voltage:1000V AC For One Minute  
 Operating Temperature Range:-55°C To +105°C  
 Materials and Finish  
 Insulator:PBT (UL94V-0)  
 Contact:Copper Alloy Nickel Undercoated  
 ,Selective Gold plated  
 Finish:Steel With Tin Plated  
 How To Order  
 5506-XXSM-X-XX

Blank:Blue(Standard Color)  
 BK:Black  
 Blank:Standard hole only  
 N:With Clinch 4-40Nut  
 SM:Female metal shell  
 No. Of Positions



Plastic Strain Relief

Pos	A	B	C	D
9	16.30	25.00	30.8	22.4
15	24.60	33.30	39.2	30.8
25	38.30	47.10	53.1	44.5
37	54.80	63.50	69.4	61.4

E				DRAWN: Cherry Wu	GENERAL TOLERANCE: .X=±0.3 .XX=±0.2	<b>Neltron Industrial Co., Ltd.</b>	DESCRIPTION: D-SUB Female IDC Connector	SIZE <b>A4</b>
D				CHECKED: Dennis Lin				
C				APPROVAL: Mike Wu	SCALE:	PART NO: 5506-XXSM-X-XX		
B					PROJECTION:			
A	14-OCT-2014		Cherry					
REV	DATE	FILE	BY					