

Signal lamps with lamp socket - E 10 (MES), 16.2 mm, lens form 1, red**1.60.502.102/1301**

Approval: VDE, SEV T70°C.

**General information**

Form of lens	round
Color of lens	transparent red
Diameter of collar	20 mm

Dimensions

Overall height	15.5 mm
Mounting depth	33 mm
Mounting hole	16.2 mm

Mechanical design

Mounting	ring nut
Terminals	screw terminals nickel-plated
Lamp socket	E 10
Lamp	filament lamp

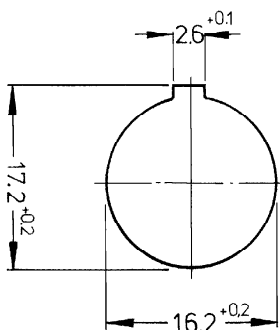
Electrical characteristics

Voltage limit max.	250 V
Power limit max.	2 W

Other specifications

Degree of protection from front side	IP40 (DIN EN 60529)
Weight	11 g
ROHS compliant	yes
REACH compliant	yes

Panel cut-out



screw terminals

