

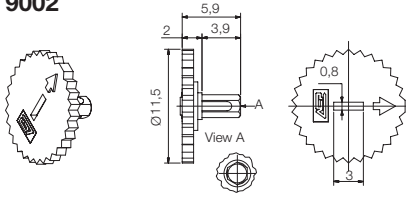
DRAWINGS CA9 // CE9

Tolerances 9 mm (in mm.):

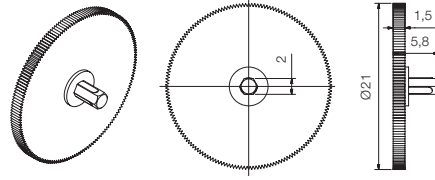
<1	±0,1
1...<5	±0,3
5...	±0,5

Thumbwheels. CA9 // CE9

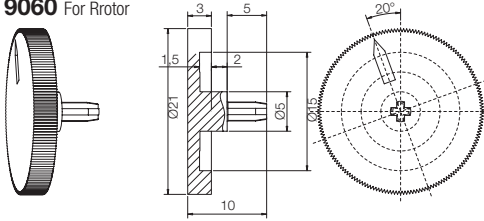
9002



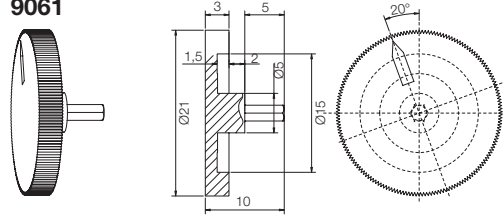
9041



9060 For Rrotor

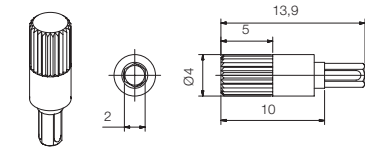


9061

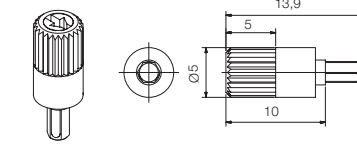


Shafts. CA9 // CE9

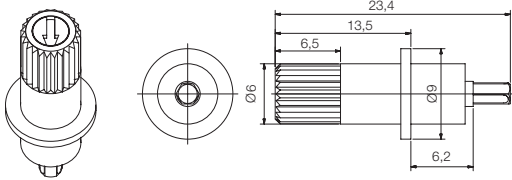
9004



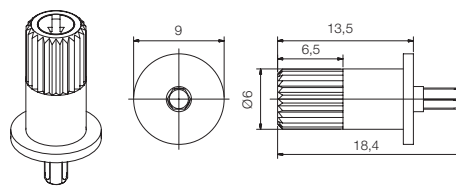
9005



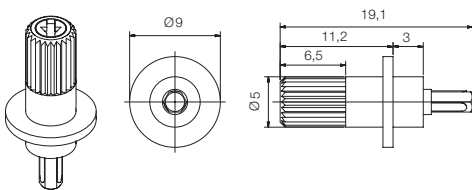
9006



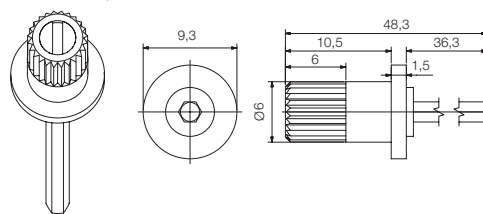
9009



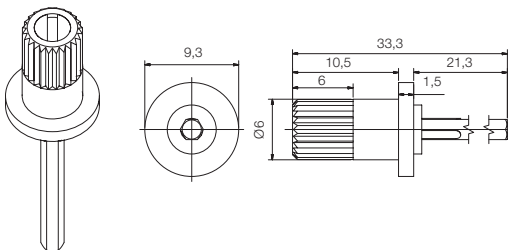
9010



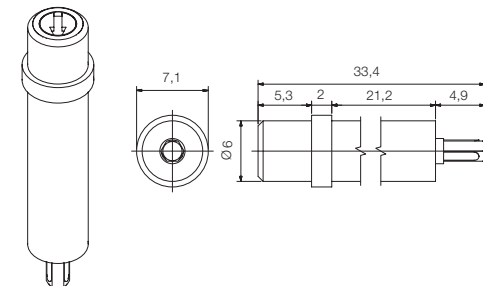
9018 For 6 potentiometers



9039 For 4 potentiometers



9047



Specifications on this catalogue are for reference only; they are subject to change without notice.

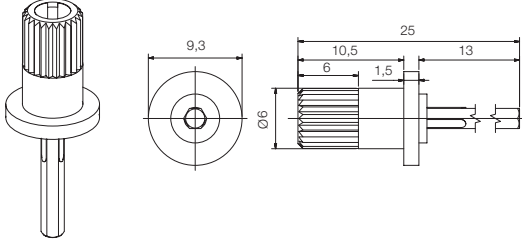
DRAWINGS CA9 // CE9

Tolerances 9 mm (in mm.):

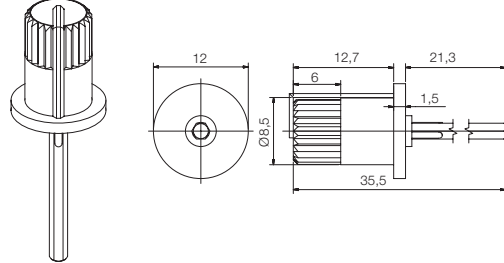
<1	±0,1
1...<5	±0,3
5...	±0,5

Shafts. CA9 // CE9

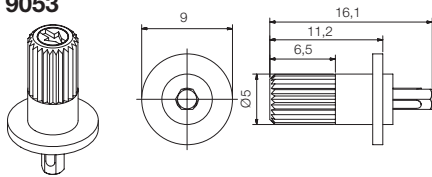
9048 For 2 potentiometers



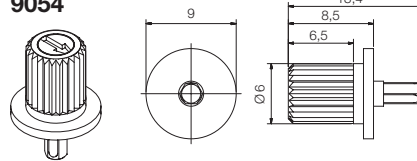
9051 For 4 potentiometers



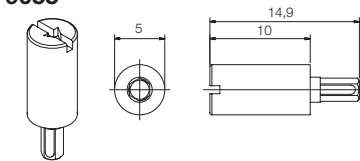
9053



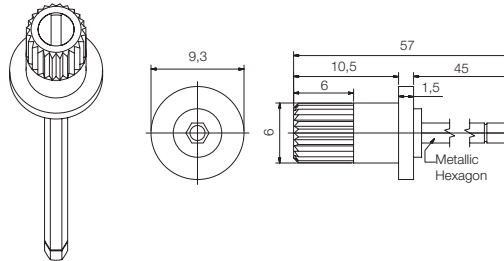
9054



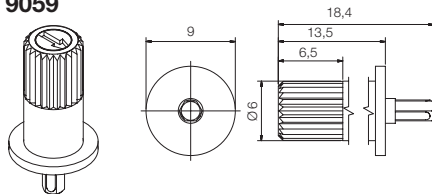
9055



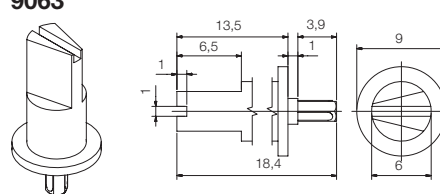
9056 For 8 potentiometers



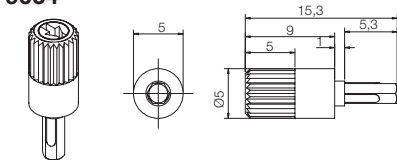
9059



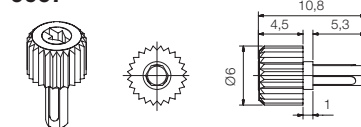
9063



9064



9067



Specifications on this catalogue are for reference only; they are subject to change without notice.