



WAGO-I/O-PRO

Item No.: 759-333



WAGO-I/O-PRO

Marking

RoHS
Compliant

Business data

Supplier	WAGO
Item no.	759-333
GTIN / EAN	4044918072472
Content	1
Order amount	1
Customer item number	

Notes

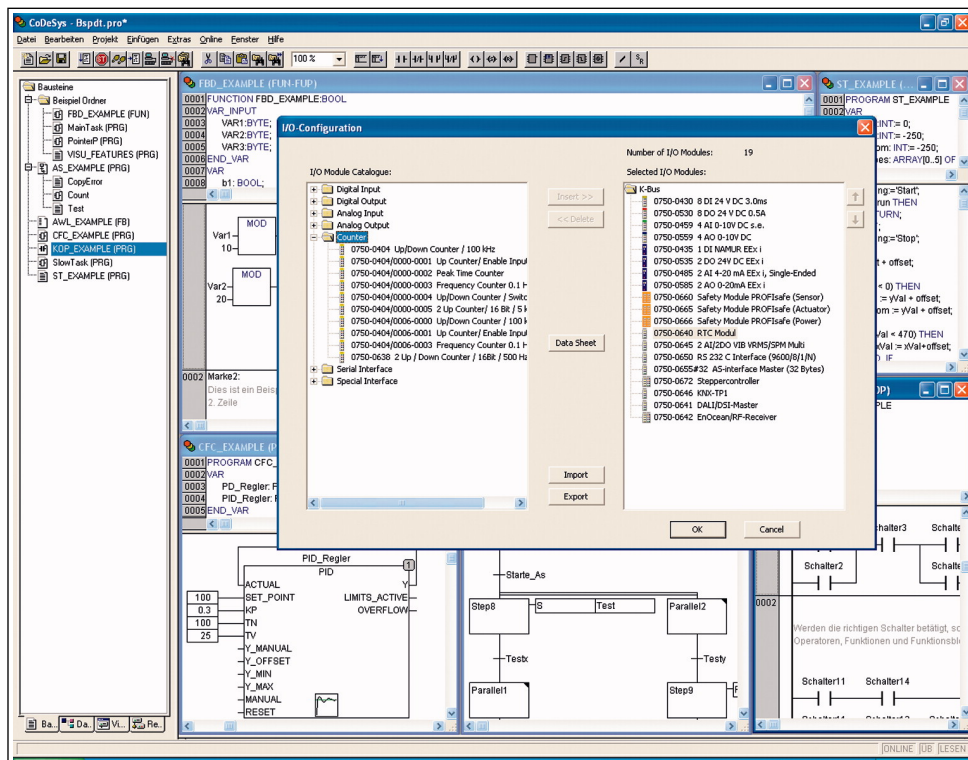
Item description: WAGO-I/O-PRO is a programming and visualization tool. It permits development of PLC applications for Programmable Fieldbus Controllers found within the WAGO-I/O-SYSTEM 750. WAGO-I/O-PRO conforms to IEC 61131-3. This standard defines the requirements fulfilled by a programming system as well as 5 programming languages for PLCs. The languages IL, LD, FBD, ST and FC are supported. For every automation task, the appropriate language can be chosen. The software meets increasing requirements of control program development, such as re-usability or modularization. Powerful translation of the programming languages Automatic declaration of variables Librarian /Library maintenance Furthermore, integrated test and diagnostic functions facilitate and expedite PLC working processes. Features: Online status indication in the program code Offline simulation Integrated visual display of internal and external flags (markers) Storage and graphic display of project variables WAGO-I/O-PRO not only programs WAGO CoDeSys Automation Alliance products but also CoDeSys Automation Alliance products from other manufacturers.

Technical data

Miscellaneous

Operating system	Windows XP (SP3 or later), Windows 7
RAM memory	min. 1 GB RAM (recommended: 2 GB RAM or more)
Hard disk storage [MB]	min. 300 [MB]
CD-ROM	required
Graphics resolution	min. 1024 x 786 (recommended: 1280 x 1024 or higher)
Mouse	required
Other	Serial interface
Processor	1 GHz or higher, with 32 bits (x86) or 64 bits (x64)
Weight [g]	212 [g]
Included	CD-ROM with software and serial communication cable 750-920

Images & drawings



Address

WAGO Kontakttechnik GmbH & Co. KG

Hansastr. 27

32423 Minden

Telefon: 0571/887-0

Fax: 0571/887-169

<http://www.wago.com>

© WAGO Kontakttechnik GmbH & Co. KG

Technische Änderungen und Irrtümer vorbehalten.